

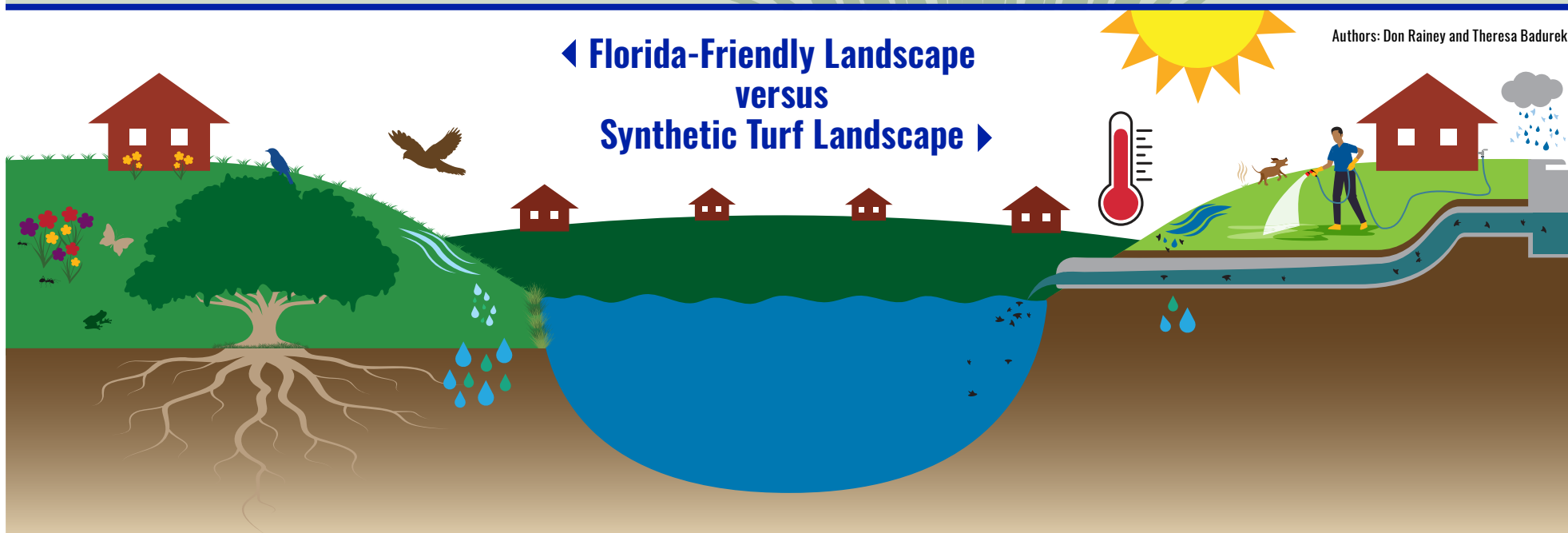
# IS THE GRASS GREENER ON THE OTHER SIDE?

## *A Florida-Friendly Perspective*

UF IFAS Extension  
UNIVERSITY of FLORIDA

Florida-Friendly  
Landscaping™ PROGRAM

Authors: Don Rainey and Theresa Badurek.



## Synthetic Turfgrass



### PROS

- High traffic areas
- No regular mowing
- Consistent appearance year-round
- No fertilizer required
- Initial water savings



### CONS

- High surface temperatures (up to 100°F hotter than natural grass)
- Increased stormwater runoff
- No support for wildlife
- Limited lifespan (10-20 years)
- Ends up in landfills
- Potential leaching of contaminants
- Requires weekly washing and cooling
- Pet waste runoff



Reference: Synthetic Turfgrass and the Nine Principles of Florida-Friendly Landscaping™  
[edis.ifas.ufl.edu/publication/EP612](https://edis.ifas.ufl.edu/publication/EP612)

March 2025

An Equal Opportunity Institution.