

STORMWATER SYSTEMS

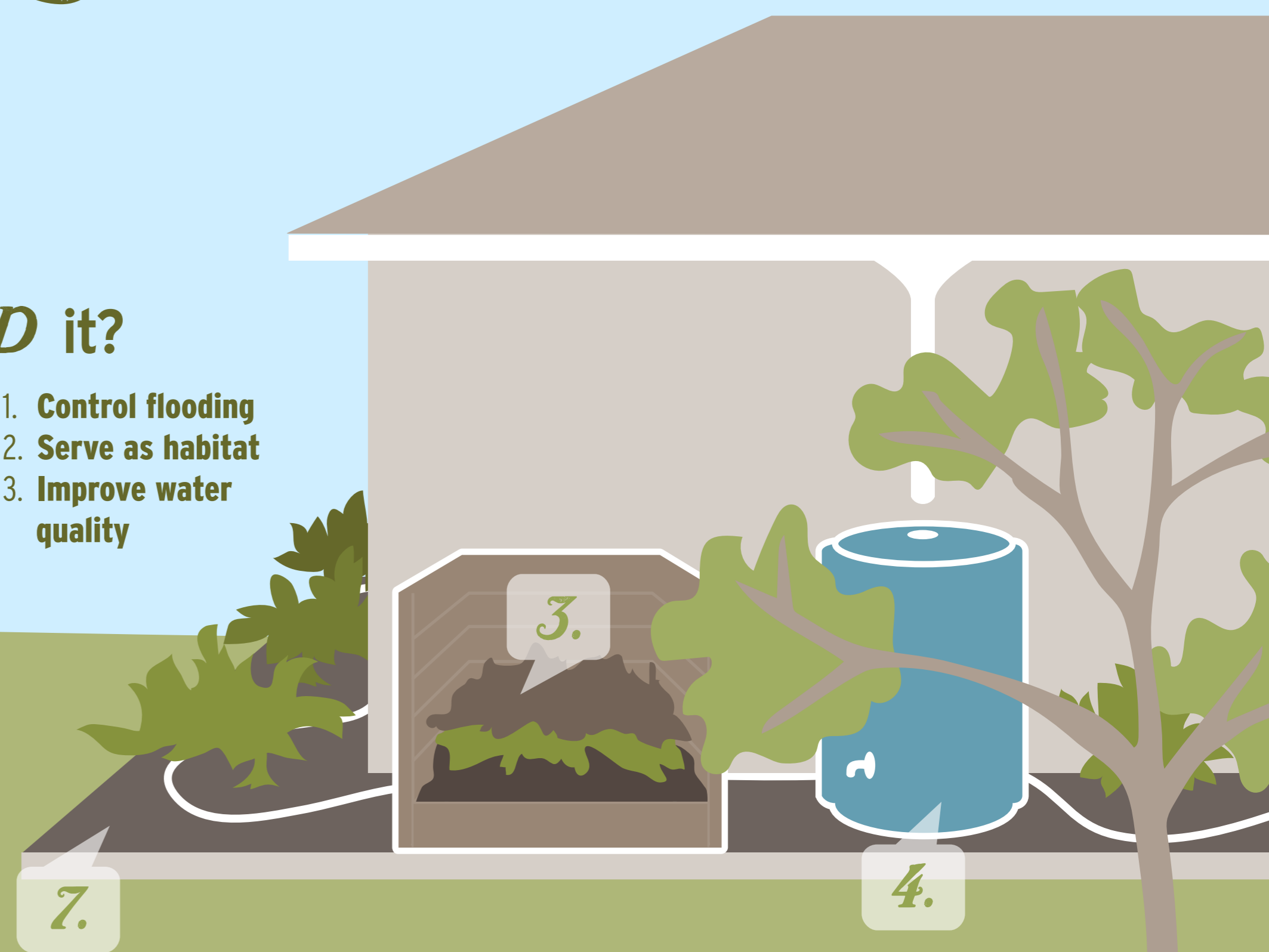
What is a *STORMWATER* System?

They consist of swales, grates or ditches that convey water to stormwater ponds. These ponds are designed to remove pollutants from the water before they drain into local water bodies and eventually the Gulf of Mexico. Stormwater runoff can contain motor oil, gasoline, fertilizers, pesticides, pet waste and sediments.

Why do we *NEED* it?

More than half of Florida's original wetlands have been drained or filled for development of agriculture, roads, housing developments or industrial complexes. Stormwater systems are meant to mimic the function of wetlands.

1. Control flooding
2. Serve as habitat
3. Improve water quality



1. Follow IFAS suggestions for grass height when mowing.
2. Don't put grass clippings into the storm drain or water bodies.
3. Clean up trash and yard waste.
4. Apply FFL principles to your landscape.
5. Clean up after your pets.
6. Use nontoxic chemical alternatives to pesticides.
7. Avoid overuse/incorrect use of fertilizers.
8. Buy low or no phosphate cleaners and detergents.
9. Plant a buffer zone of low-maintenance plants between your lawn and a shoreline.
10. Plant trees around the perimeter of a stormwater pond.
11. Repair eroded slopes.
12. Clear or clean inflow/outflow structures.

10.

9.

7.

4.

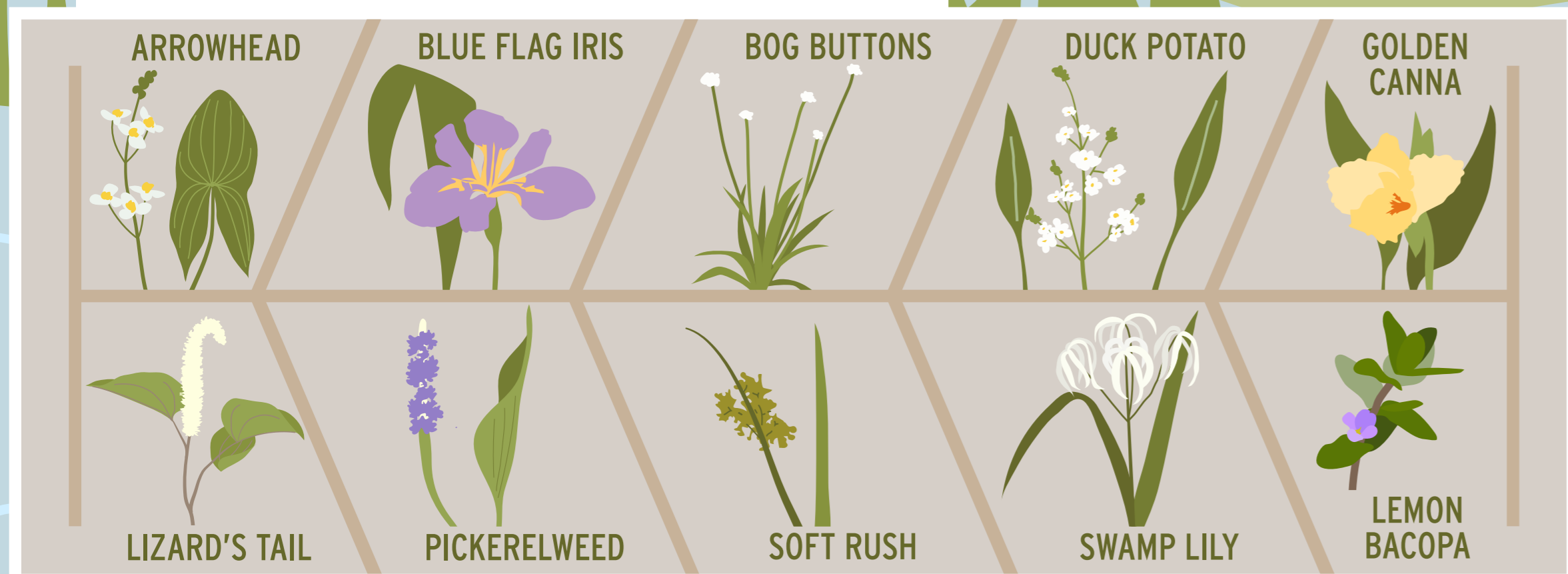
11.

12.

AQUASCAPING

Aquascaping is landscaping shorelines with aquatic and wetland plants.

- More beautiful
- Attract more wildlife
- Filter more pollutants
- Reduce shoreline erosion



For more information on Florida-Friendly Landscaping, visit www.floridayards.org

MAINTENANCE Responsibility

If your neighborhood has an association they are responsible for all costs associated with upkeep and maintenance. Some neighborhoods without associations are managed by the county. When in doubt about who is responsible contact:

Southwest Florida Water Management District Sarasota Service Office: 941-377-3722

Sarasota County Environmental Compliance: 941-861-5000

UF | IFAS Extension
UNIVERSITY of FLORIDA

