



Master Gardner Pest ID Training Manatee County

Hugh Smith
Vegetable Entomologist

Gulf Coast Research and Education Center
Balm, FL 33598





Aphid colony – note honeydew and caste skins

Broad mites



Females and eggs

Damage to pepper



Whiteflies (*Bemisia tabaci*): Damage



Thrips: Damage



UC Statewide IPM Project
© 2000 Regents, University of California



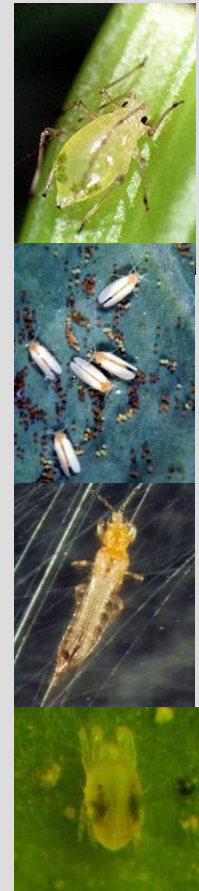
UC Statewide IPM Project
© 2000 Regents, University of California

Two spotted spider mite damage

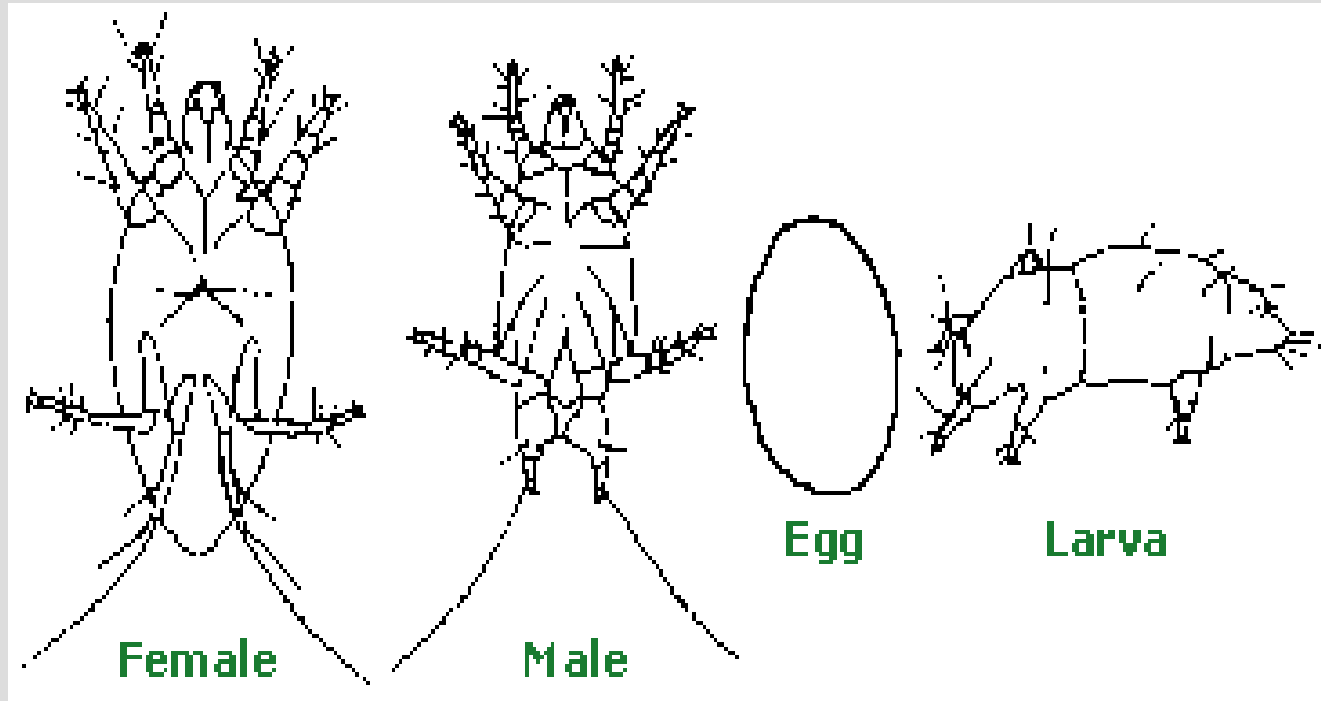


Five Pests:

- Aphids
- Whiteflies
- Thrips
- Spidermites
- Broad mites

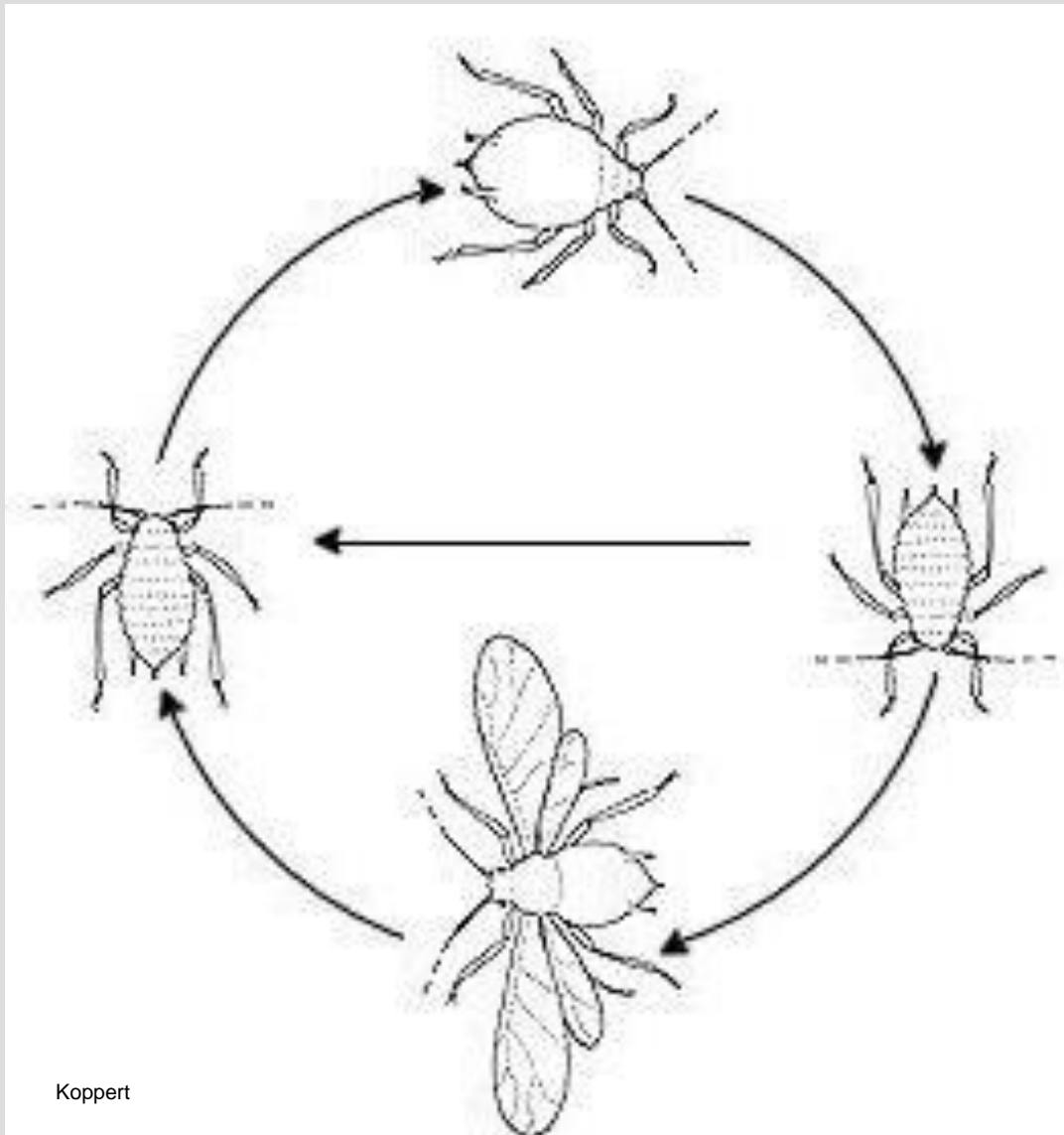


Broad mite life cycle



University of Minnesota

Aphid Life Cycle



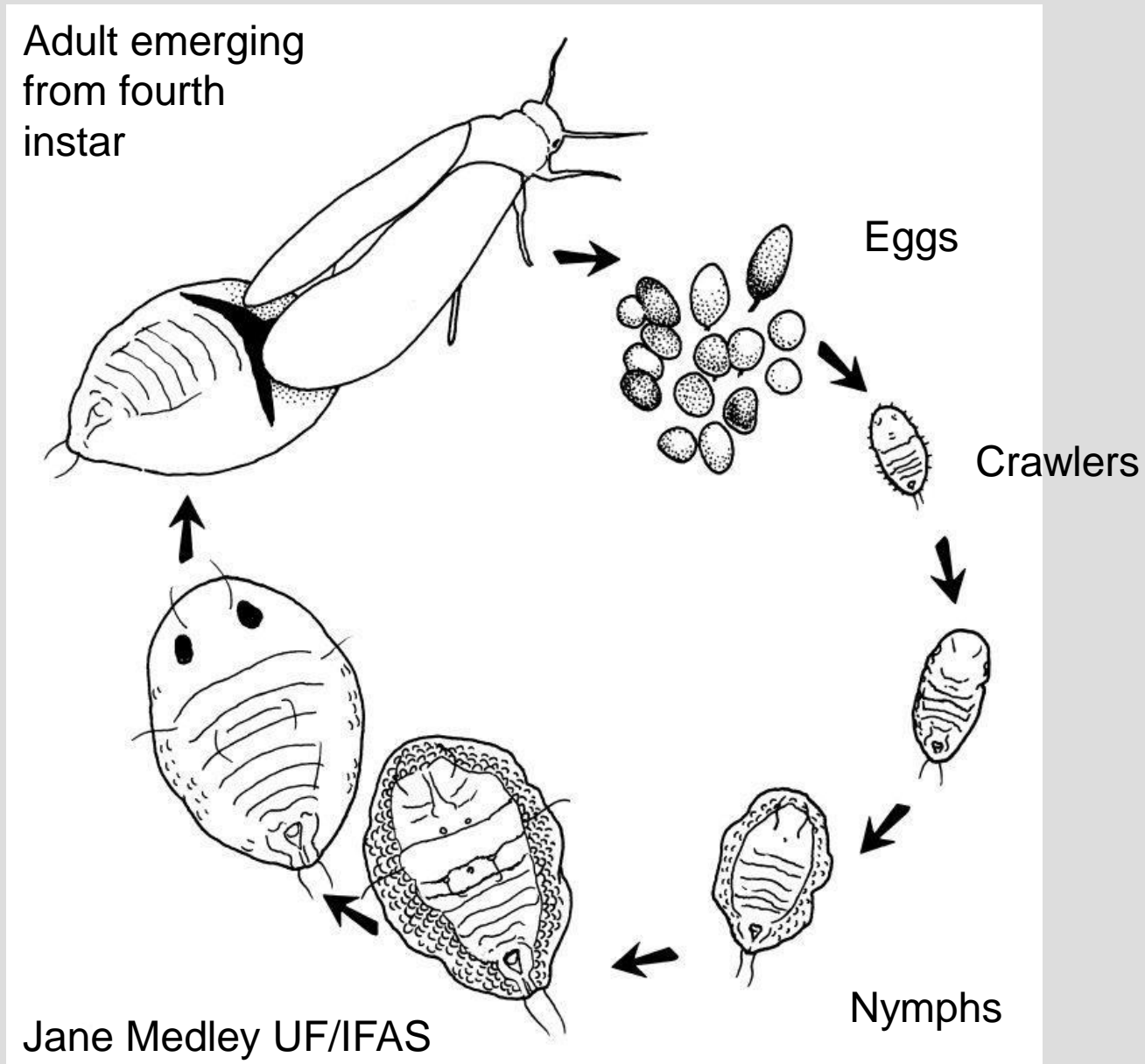
Aphids in Florida are parthenogenetic: Females don't need to mate to produce offspring.

Give birth to nymphs, not eggs. Nymphs are born pregnant!

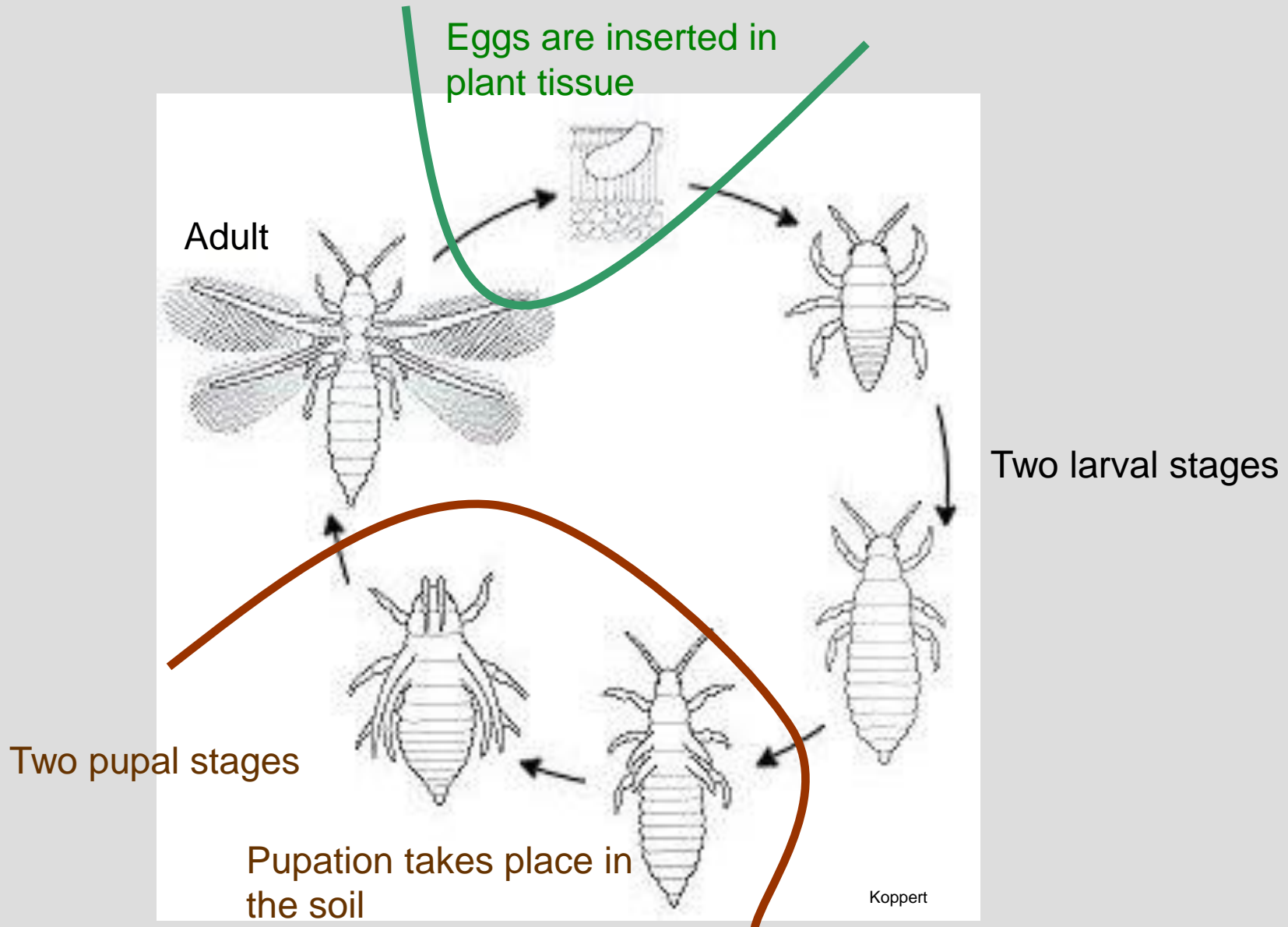
Adults can be winged or without wings.

Cornicles are diagnostic.

Whiteflies: Life Cycle



Thrips: Life Cycle



Two spotted spider mite: Life Cycle

